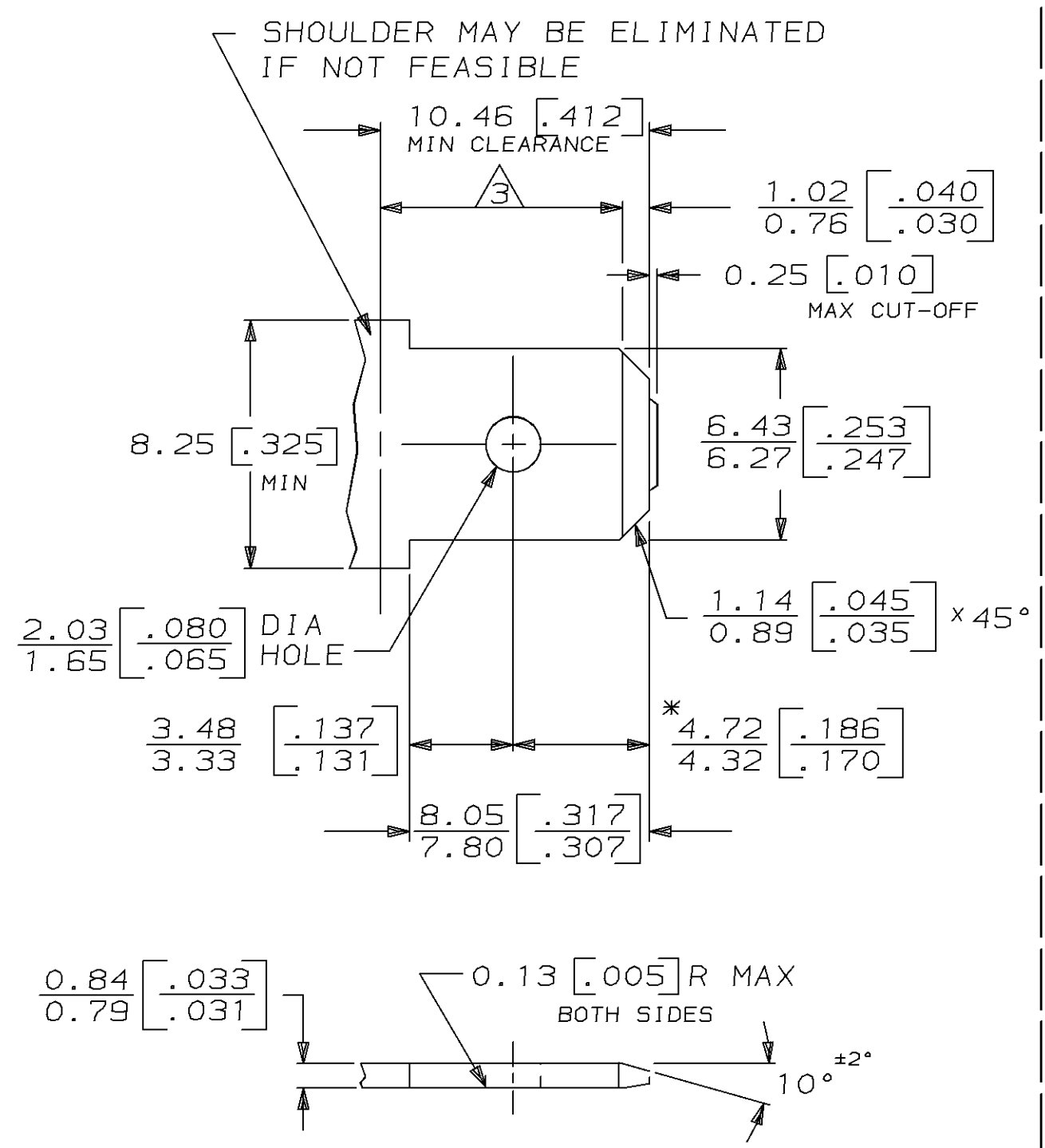
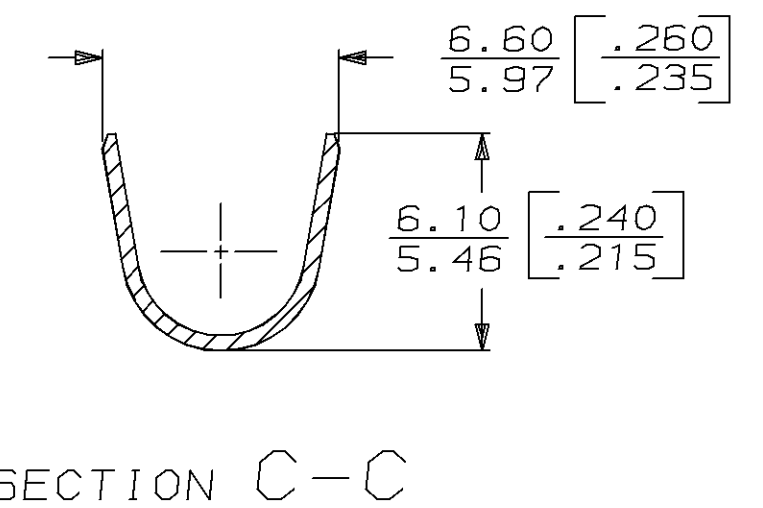
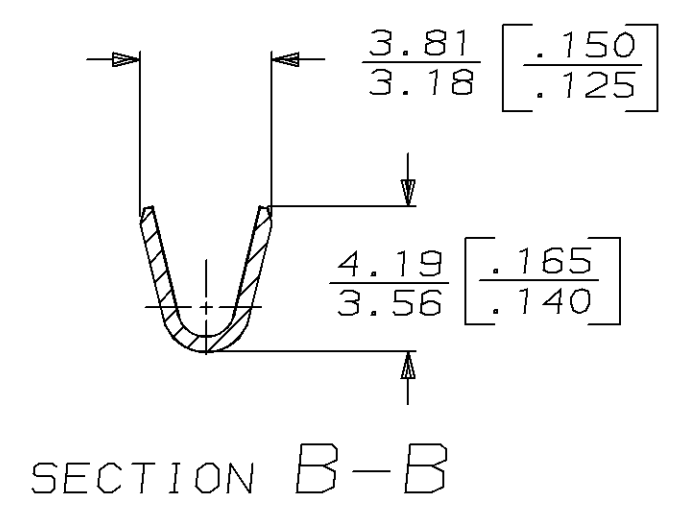
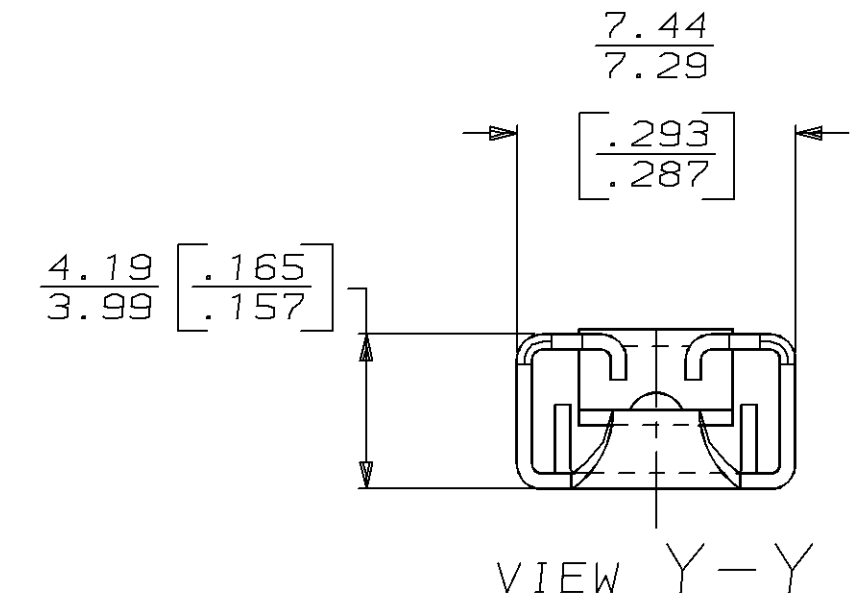
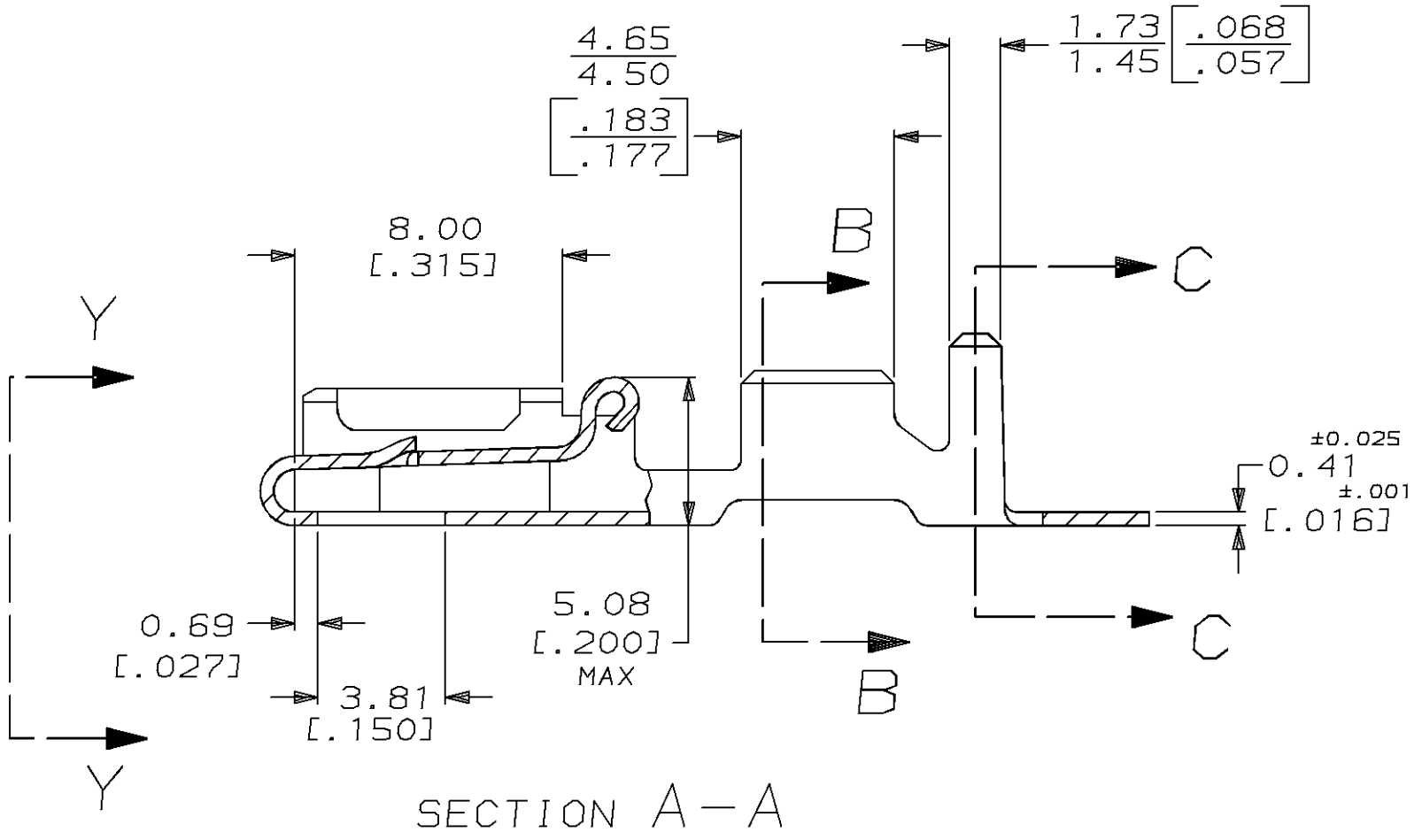
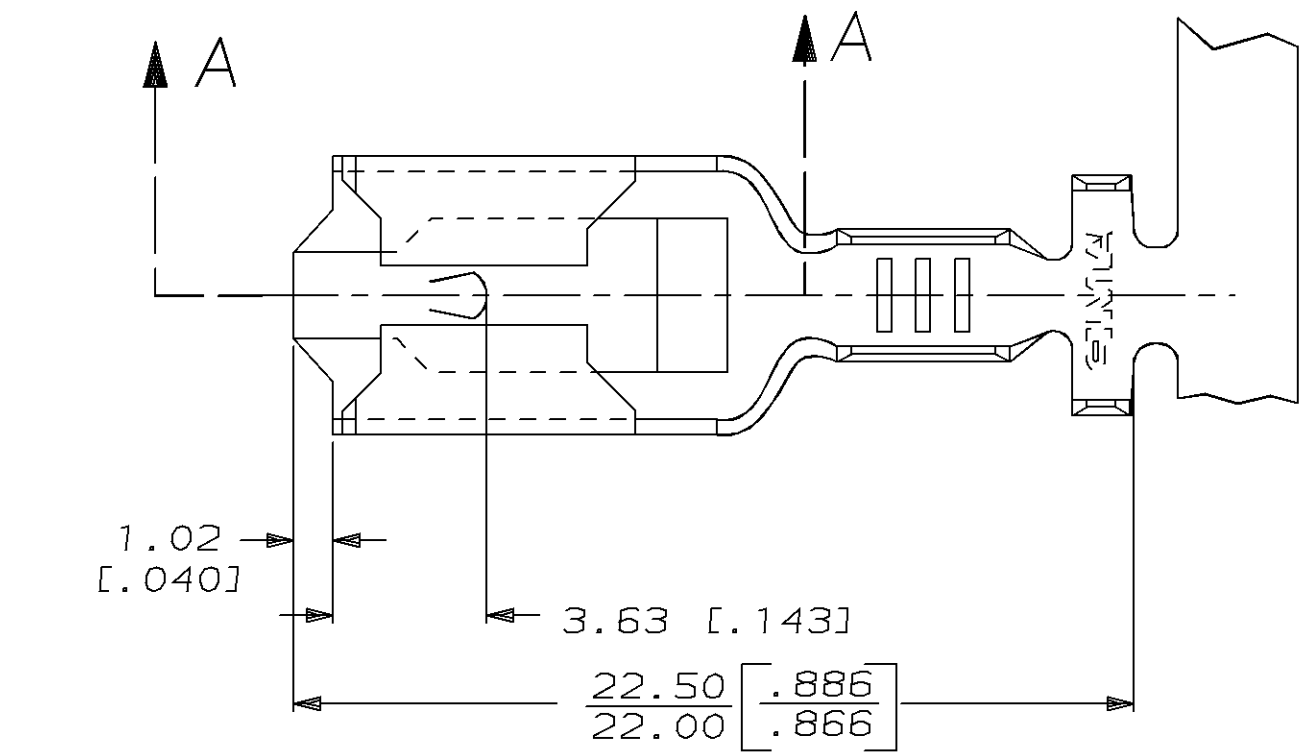


| LOC | DIST | P | F | ZONE | LTR | DESCRIPTION | DATE | APPD |
|-----|------|---|---|------|-----|-------------------------|---------|-------|
| AF | 50 | | | | B | REL -1 PER 0710-0059-96 | 2/19/96 | JR/JG |

SUGGESTED MATING TAB



- 1 - MATL: 1/2H BRASS OR NICKEL PL STEEL.
 - 2 - NO BURRS PERMISSIBLE AT HOLE.
 - 3 - MUST BE FLAT WITHIN 0.076 [.003] OVER THIS LENGTH.
 - 4 - TIN PLATING IS REQUIRED ON BRASS WHEN TERMINAL TEMP. IS OVER 225°F.
 - 5 - HOLE MUST BE SYMMETRICAL ABOUT TAB Q WITHIN 0.076 [.003]
- * TO BE USED ONLY WHEN SHOULDER IS ELIMINATED.



| | | | | | | | |
|---|---------------------------|---|-------------------|---|--|---------|--|
| 3.43-4.95 DIA [.135-.195] DIA | | 0.7-2.0mm ² [#18-#14] AWG | | 0.81 [.032] | | 63812-1 | |
| INSULATION RANGE | | WIRE SIZE | | MATING TAB THK ±0.025 [.001] | | PART NO | |
| F OR O | 5.33 [.210] / 5.84 [.230] | F | 2.79 [.110] | AMP Incorporated Harrisburg, PA 17105-3608 | | | |
| TYPE | INSUL BARREL CRIMP | TYPE | WIRE BARREL CRIMP | | | | |
| WIDTH | ±0.38 ±[.015] | HEIGHT | ±.051 [±.002] | NAME | | | |
| DO NOT SCALE PRINT. UNLESS SPECIFIED DIMENSIONS IN mm [INCHES] TOLERANCES ON: | | | | RECEPTACLE, POSITIVE-LOCK, MK I, 6.35 [.250] SERIES | | | |
| 2 PLC DEC ± 0.25 [.010] | | | | SIZE | | | |
| 3 PLC DEC ± - | | | | CAGE CODE | | | |
| ANGLES ± - | | | | DRAWING NO | | | |
| MATERIAL | | | | SCALE | | | |
| H06 BRASS | | | | 5:1 | | | |
| FINISH | | | | SHEET | | | |
| TIN 0.002498 [.000098] MIN | | | | 1 OF 1 | | | |
| APPLICATION SPEC | | | | CUSTOMER DRAWING | | | |
| WEIGHT - | | | | | | | |

THIS DRAWING IS A CONTROLLED DOCUMENT FOR AMP INCORPORATED. IT IS SUBJECT TO CHANGE AND THE CONTROLLING ENGINEERING ORGANIZATION SHOULD BE CONTACTED FOR THE LATEST REVISION.